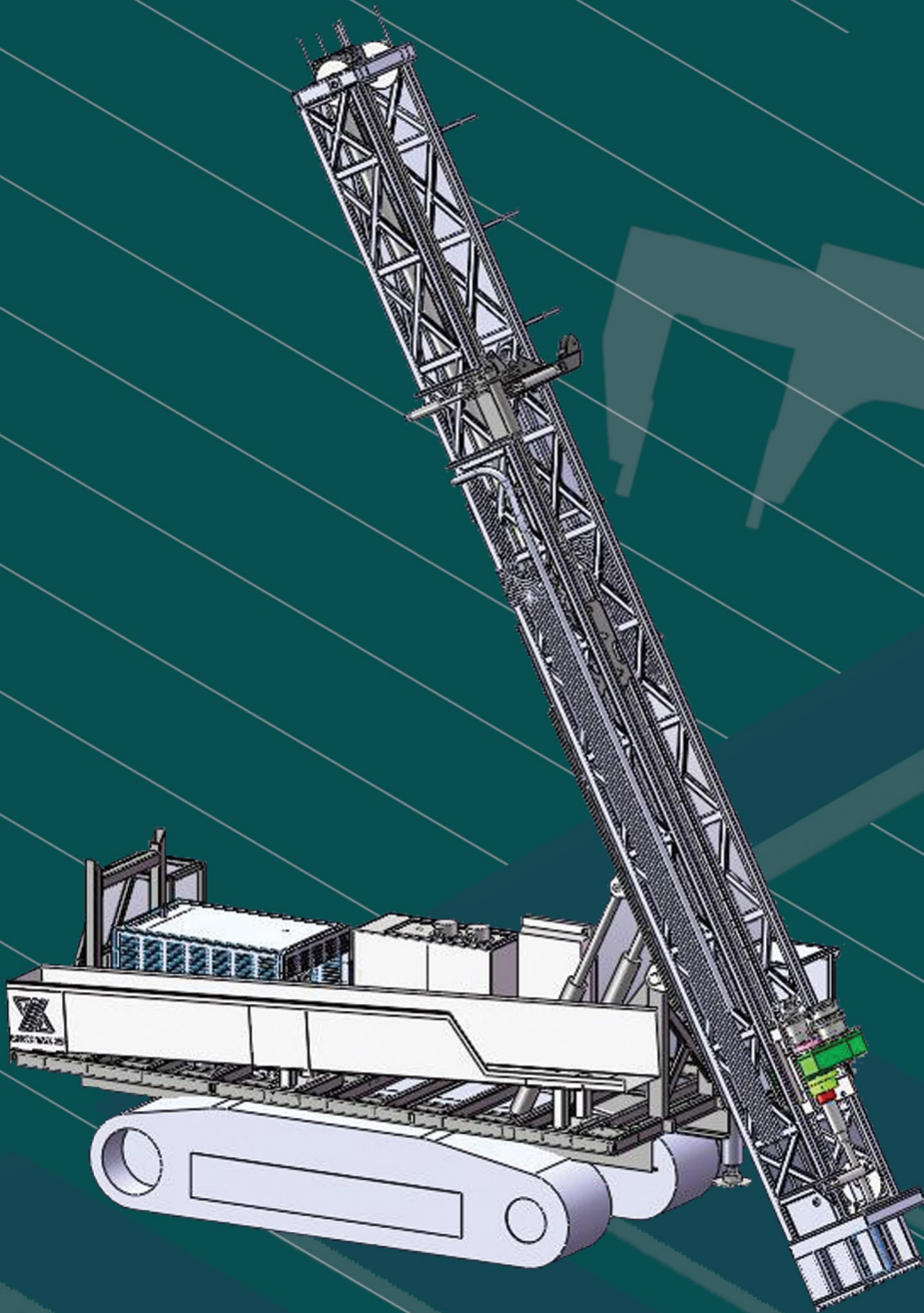
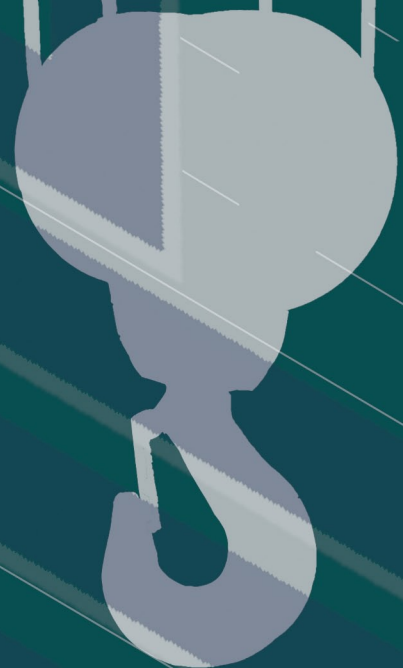




DELTA MAKINA



**DELTA DRILL
DRC-140**
Reverse Circulation
Drill Rig





DELTA DRILL DRC-140

POWER UNITS:

Manufacture: Cummins

Model: 6 CTA 8,3L Water Cooled, Turbo Charged, Diesel

Rpm: 2200 RPM

Power: 194 KW (260 HP)

MAST AND FEED SYSTEM:

Mast Structure: Frame Type

Feed Travel: 7,0 M

Pull Up: 14.000 KG

Pull Down: 7.500 KG

Drilling Angle: 90' - 45'

Mast Type: Dump

Mast Sliding: 1,70 M

Rod Pull Length: 6,0 M



DELTA DRILL DRC-140

JIB BOOM:

Max Holding Capacity: 1.500 KG

Rope Size: 10 MMx 20 MM

Hydraulically Activated, 0'-180' Movement, 35 CM, Sliding

ROTATION UNIT:

Rotation Unit RPM: 0-100

Rotation Unit Torque: 10000 NM (MAX)

Power: Hydraulic Motor, Variable/Reversible

WATER PUMP:

Type: Hydraulic Driven

Capacity : 80 LT/MIN

Pressure: 70 BAR(MAX)



DELTA DRILL DRC-140

DEPTH CAPACITY

Rod Size: 4 1/2 INCH

Max Depth: 350 M

MOUNTING:

Type: Crawler

Support: 4 Hydraulic Jacks

Speed: 3 KM/HR

Gradeability: 75 %

Movement: Control By Sperate Hydraulic Panel

DIMENSIONS & WEIGHT:

Frame Width: 230 CM

Frame Length: 500 CM

Height (inc. mast & rotation unit): 345 CM

Weight: 16.450 KG



DELTA MAKINA

As Delta Makina improves its products with new technologies, these specifications will change in the course of production.

technical specifications

DELTA DRILL DRC-140

SLIPS AND BREAKOUTS:

Hydraulic Activated Tong Wrench

Hydraulic Activated Holding Wrench

PIPE PACK:

Holds 15 Pieces OD 4 1/2 INCH Of 20 FT

CYCLONE:

*Directly Mounted On The Frame With Rotatable Arm And
17 M 4 INCH Discharge Hose*

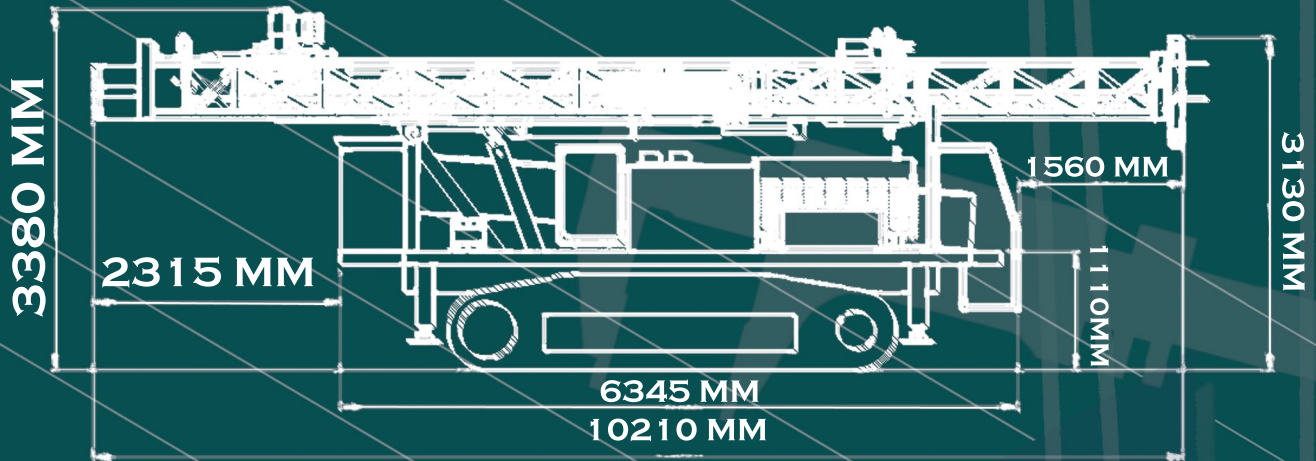
AIR AND MUD LINE

*Ready For Compressor And Mud Pump Connections With
Valve*

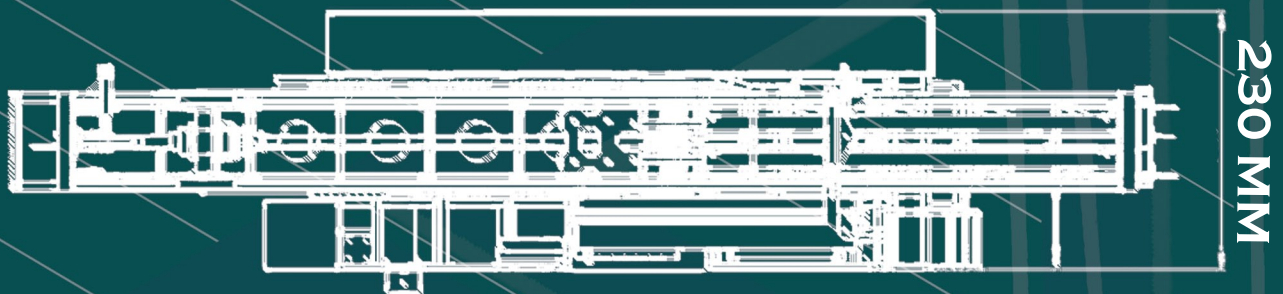


DELTA DRILL DRC-140

SIDE VIEW: (IN TRANSPORT POSITION)



TOP VIEW:



FRONT VIEW:

